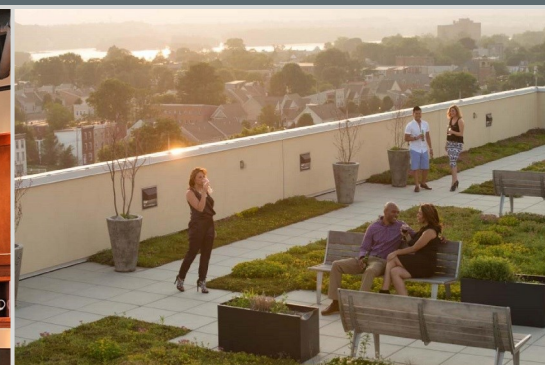


THE 1500 CONDOMINIUM, APT. 511

1500 N. Sixth Street, Harrisburg, PA 17102



REPRESENTATIVE PHOTO OF SIMILAR UNIT



\$499,500 FOR SALE

2,307 ft² | 3 beds | 3 full baths

Declarant-owned Unit | Condominium

PROPERTY INFORMATION

Year Built 2012

Municipality City of Harrisburg
Harrisburg School District
Dauphin County

Home Features Loft apartment
Private garden terrace
Floor-to-ceiling windows
Central air
Washer & dryer
Ample closet space
1 parking space included

Building Features Roof gardens
Storage available
Private garage level
Key fob access security
Fitness room
Dry-cleaning services
Pets allowed

HOA Dues \$609 per mo.

Taxes \$10,189 per yr.

Incredible opportunity to own and customize a 3-bedroom, 3-bathroom penthouse loft at the most extraordinary address in Midtown Harrisburg!

Ceilings in the living room soar over 20 feet with oversized windows and theatrical lighting. The apartment is north-facing with natural light entering from three directions. The kitchen and bathrooms are ready to be customized with selections from the Seller's finish options. A private, parapeted garden terrace adjoins the master suite, which also includes a huge walk-in closet and large ensuite with soaking tub and separate walk-in shower. Other in-home features include individual electric heat pump, individual water heater, washer and dryer, and bonus closet space.

The sale price includes one (1) reserved parking space in the gated, private garage level. One (1) additional space may be purchased for additional cost.

The 1500 Condominium is conveniently located within walking distance to Riverfront Park and many favorite restaurants, retail stores, and entertainment, such as the Midtown Cinema, Susquehanna Art Museum, and Broad Street Market. Vartan Property Management provides 24/7 on-call maintenance.

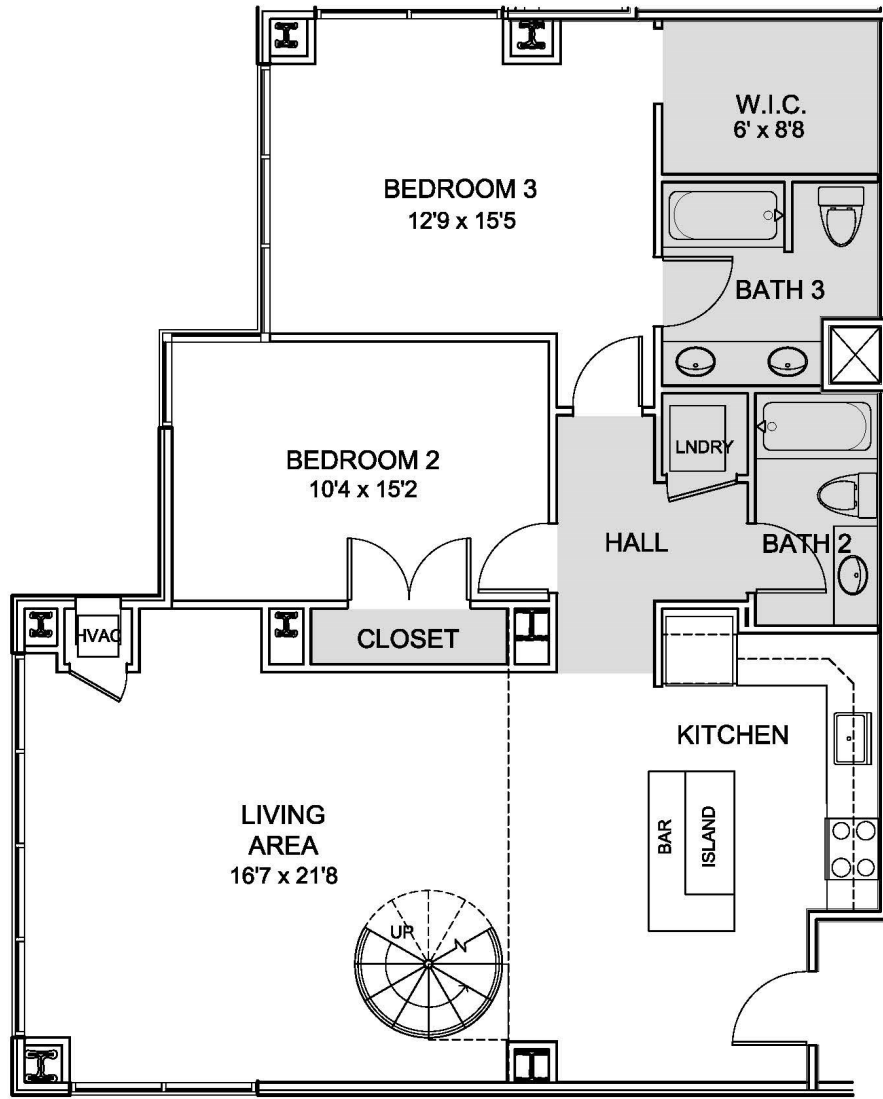
The Seller will complete and customize the unit with finishes selected from Seller's finish schedule.

Listing by Vartan Property Management, 3605 Vartan Way, Suite 301, Harrisburg, PA 17110.



THE 1500 CONDOMINIUM, APT. 511

1500 N. Sixth Street, Harrisburg, PA 17102



FIFTH FLOOR

THREE-BEDROOM LOFT UNIT

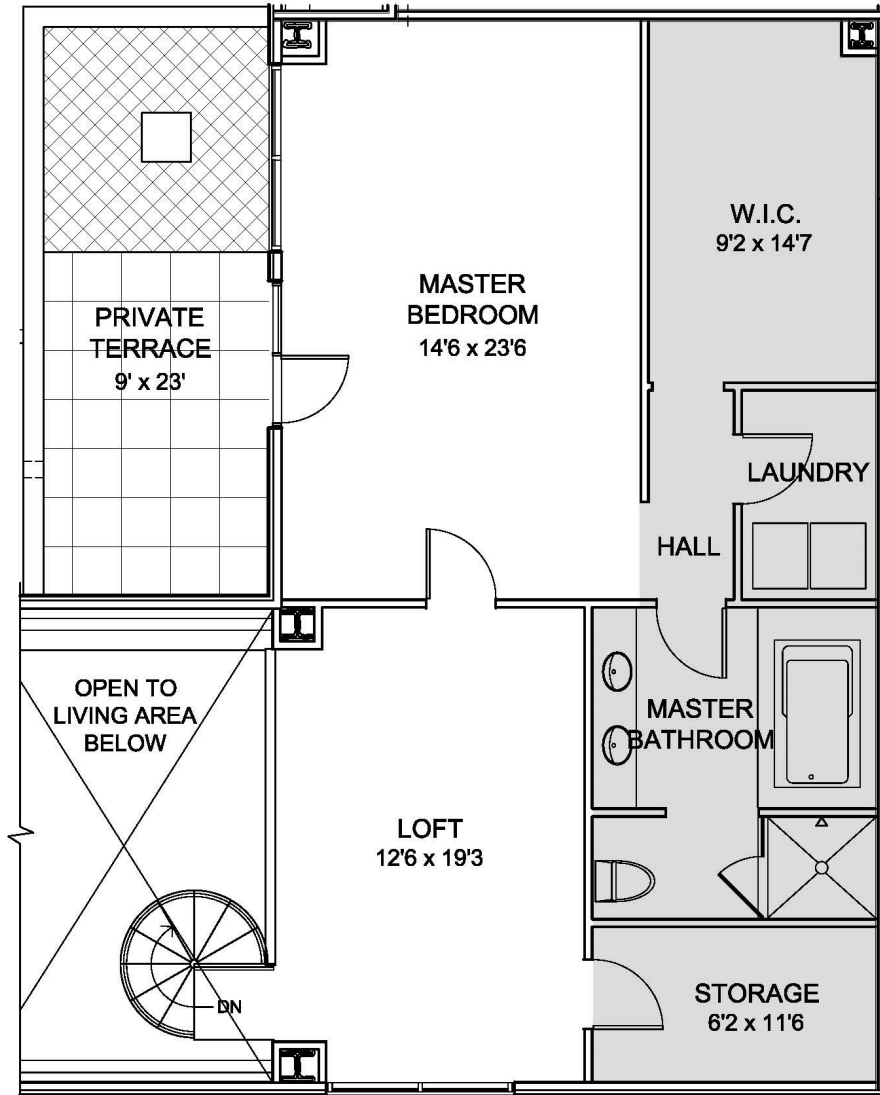
Unit 511

- SHADED AREA INDICATES 8'6" HIGH DRYWALL CEILING
- ROOM SIZES ARE APPROXIMATE AND MAY VARY SLIGHTLY



THE 1500 CONDOMINIUM, APT. 511

1500 N. Sixth Street, Harrisburg, PA 17102



SIXTH FLOOR

THREE-BEDROOM LOFT UNIT

Unit 511

- SHADED AREA INDICATES 8'6" HIGH DRYWALL CEILING
- ROOM SIZES ARE APPROXIMATE AND MAY VARY SLIGHTLY

