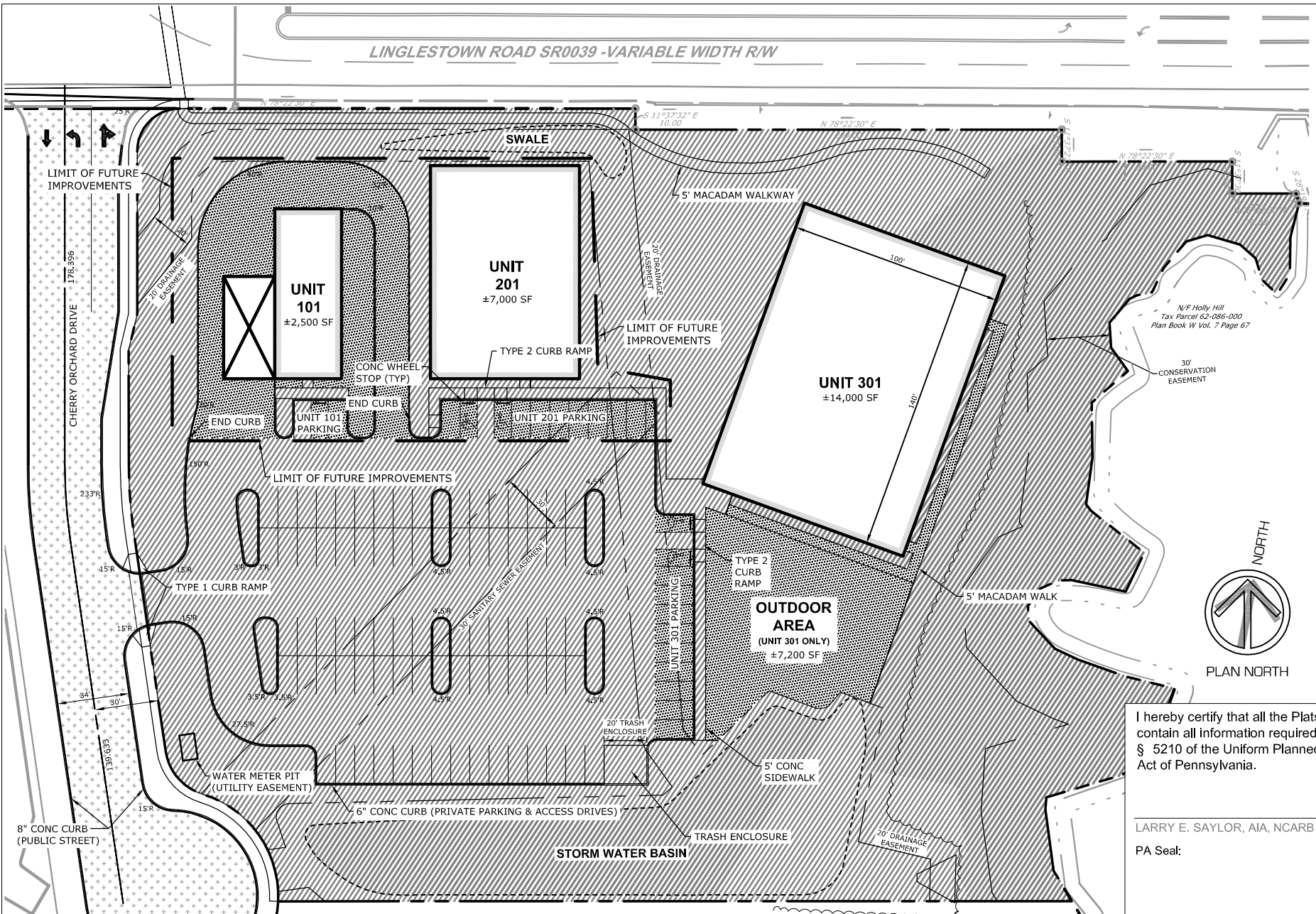


LINGLESTOWN ROAD SR0039 -VARIABLE WIDTH R/W



TKS ARCHITECTS INC.
930 CENTURY DRIVE
SUITE 103
MECHANICSBURG, PA 17055

THE CHERRY ORCHARD
PLANNED COMMUNITY
2323 LINGLESTOWN ROAD
HARRISBURG, PA 17110

PLATS
AND
PLANS
AUG 07, 2015
SHEET 1

I hereby certify that all the Plats and Plans contain all information required by 68 Pa. C.S. § 5210 of the Uniform Planned Community Act of Pennsylvania.

LARRY E. SAYLOR, AIA, NCARB
PA Seal:

SITE PLAN

SCALE: 1/64" = 1'-0"

FUTURE IMPROVEMENTS NEED NOT BE BUILT.

SITE PLAN NOTES:

- ALL RADII ARE 5 FEET, UNLESS SPECIFICALLY DIMENSIONED OTHERWISE WITHIN THE PLAN VIEW. THIS INCLUDES CURB RADII, RADII ON PROPOSED EDGES OF BITUMINOUS PAVEMENT, # RADII INDICATED FOR PAVEMENT MARKINGS.

LEGEND:

 COMMON FACILITIES

 PUBLIC ROAD

 LIMITED COMMON FACILITIES